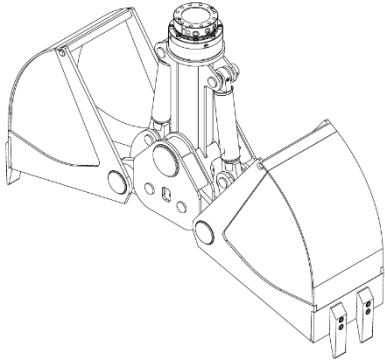


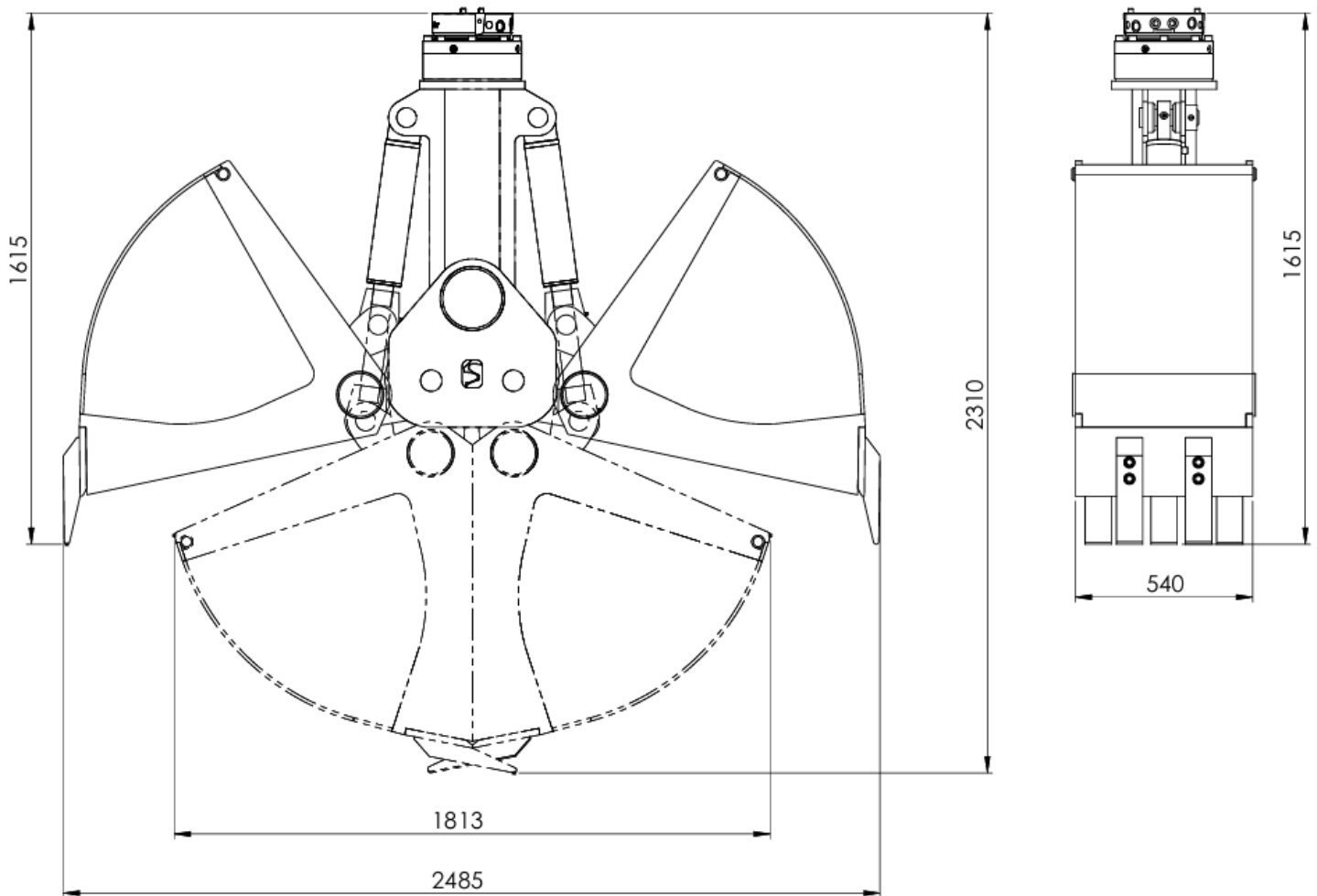


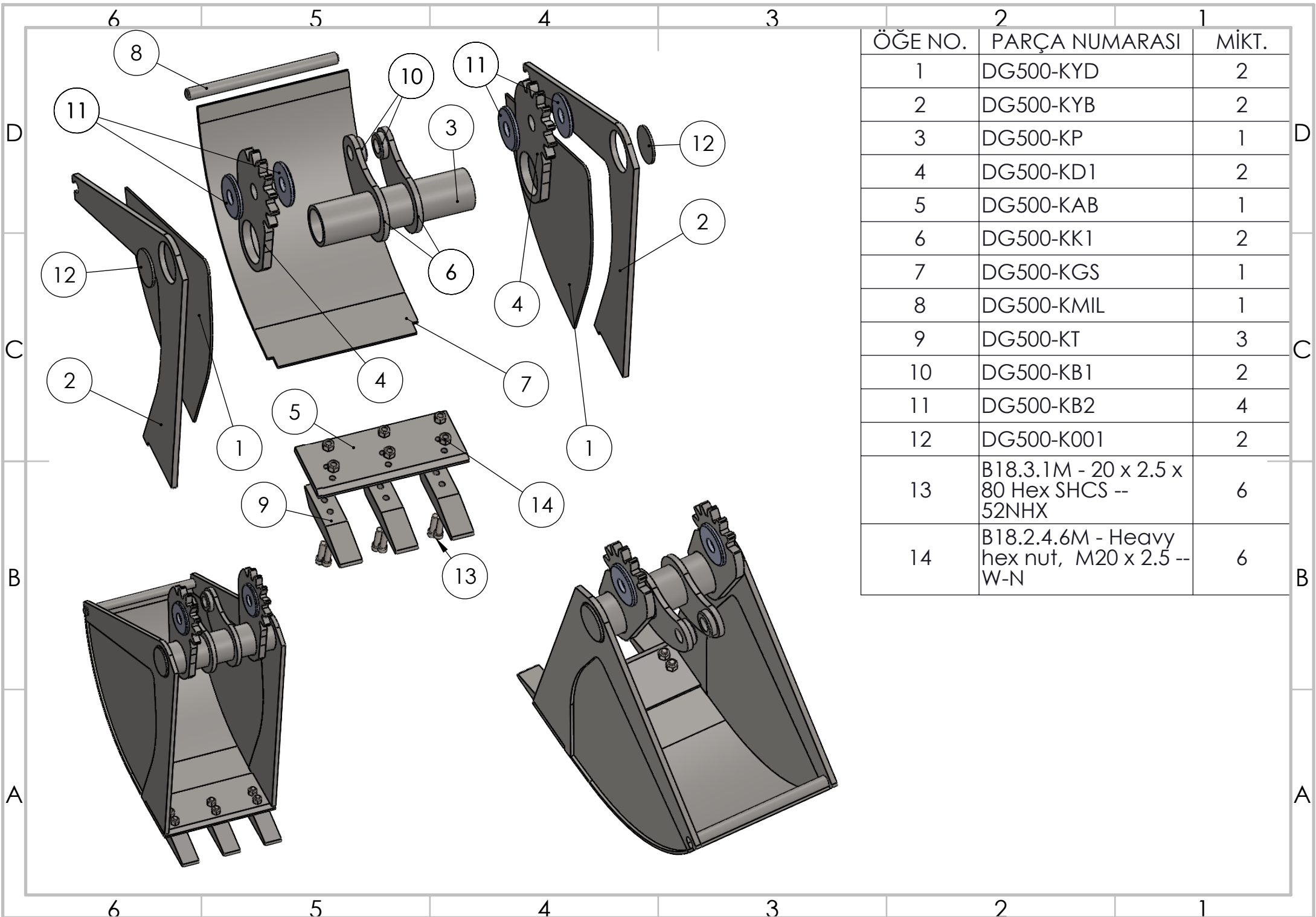
DG500



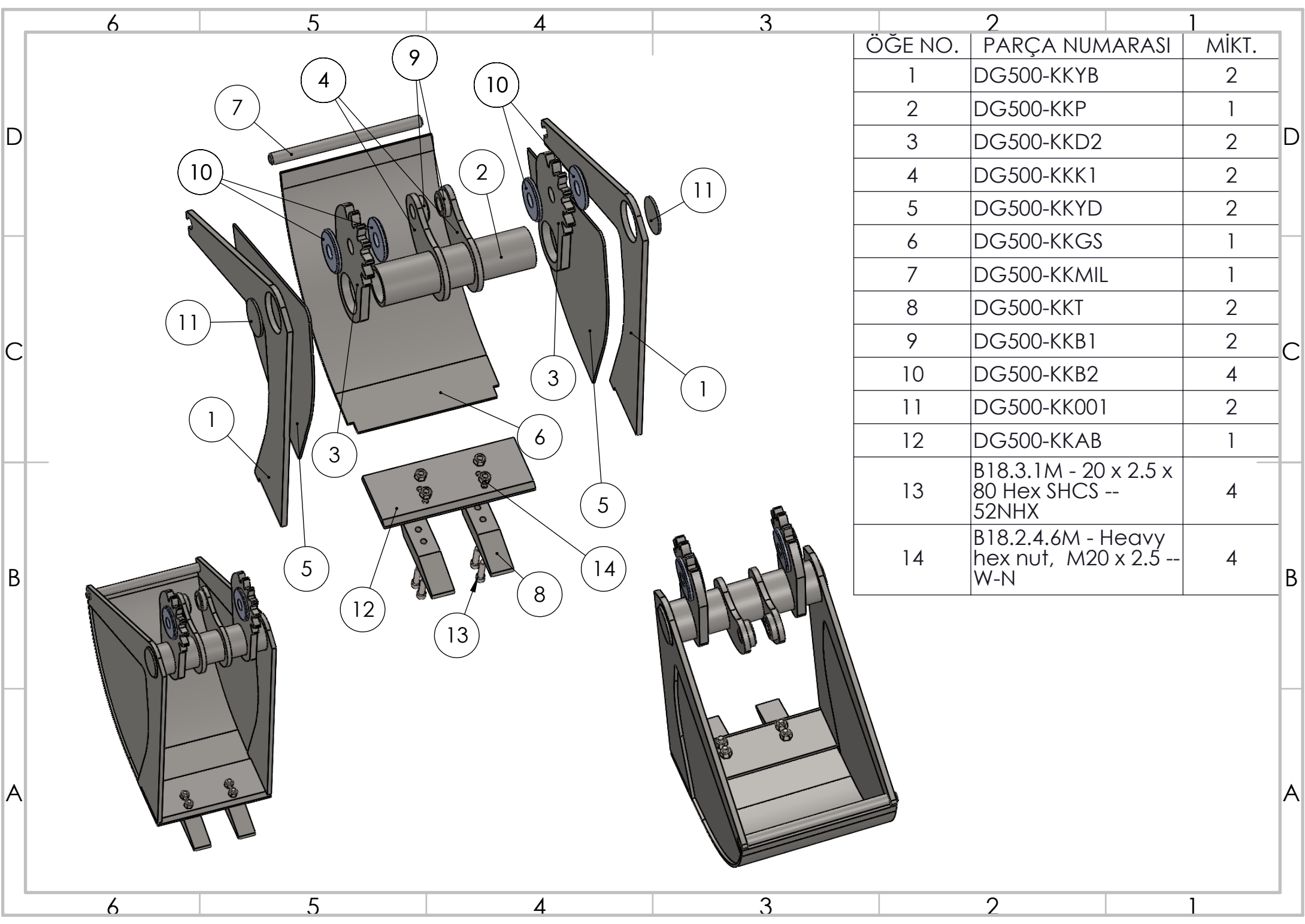
| | |
|----------|-------------------|
| Max load | -kg |
| Volume | 0.5m ³ |
| Weight | 930 kg |

| Cylinder | Diameter | Recommend pressure |
|-------------|----------|--------------------|
| Pipe 105-90 | Shaft=60 | 160 bar |

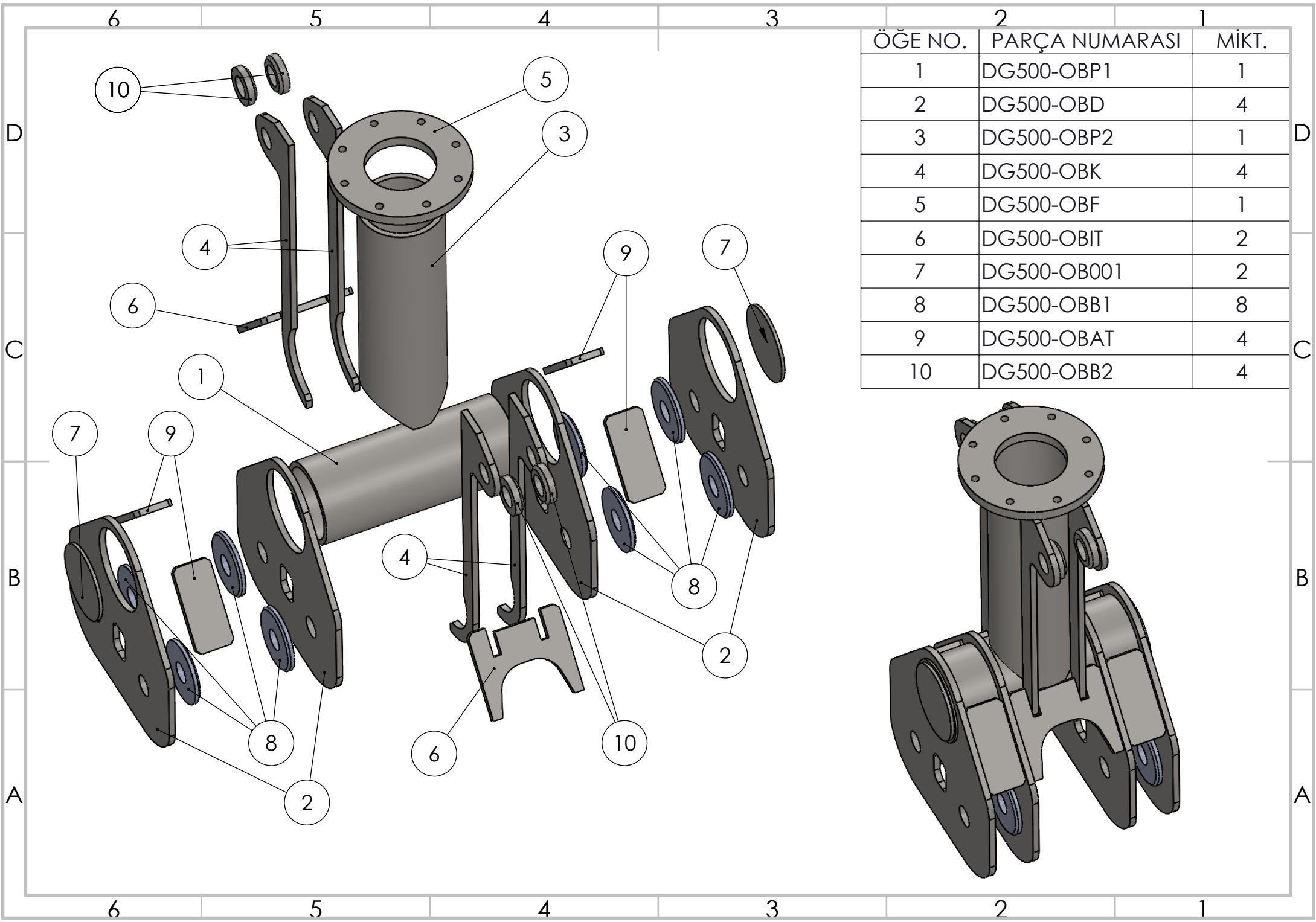




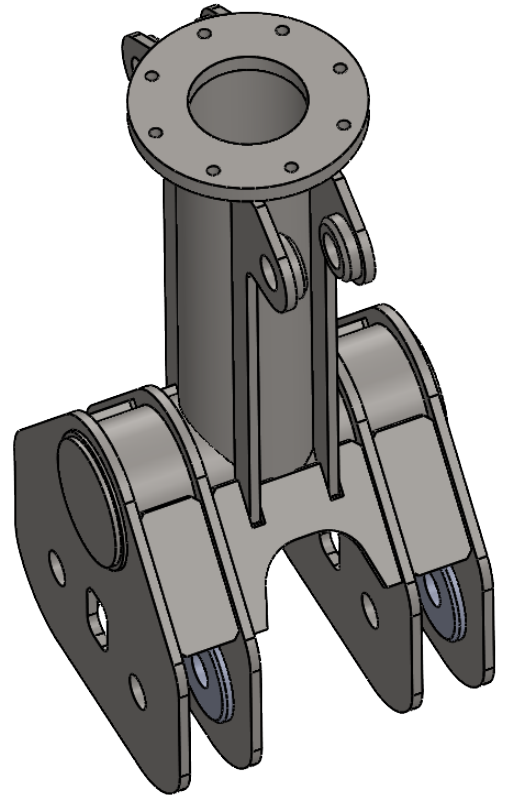
| ÖĞE NO. | PARÇA NUMARASI | MİKT. |
|---------|--|-------|
| 1 | DG500-KYD | 2 |
| 2 | DG500-KYB | 2 |
| 3 | DG500-KP | 1 |
| 4 | DG500-KD1 | 2 |
| 5 | DG500-KAB | 1 |
| 6 | DG500-KK1 | 2 |
| 7 | DG500-KGS | 1 |
| 8 | DG500-KMIL | 1 |
| 9 | DG500-KT | 3 |
| 10 | DG500-KB1 | 2 |
| 11 | DG500-KB2 | 4 |
| 12 | DG500-K001 | 2 |
| 13 | B18.3.1M - 20 x 2.5 x 80 Hex SHCS -- 52NHX | 6 |
| 14 | B18.2.4.6M - Heavy hex nut, M20 x 2.5 -- W-N | 6 |



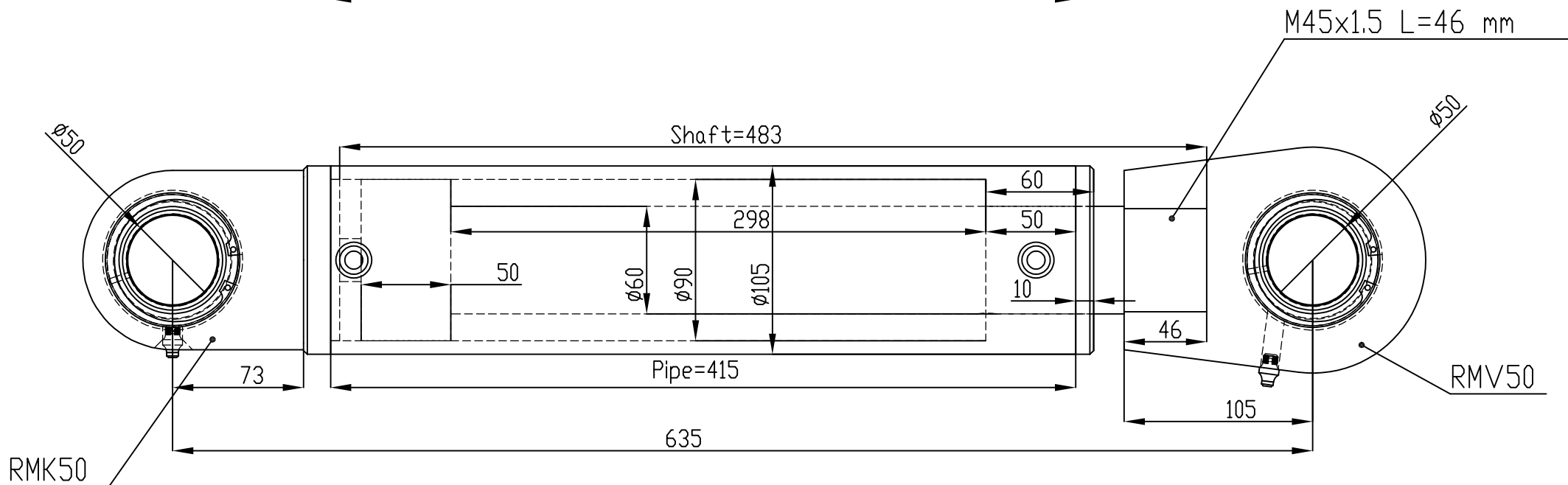
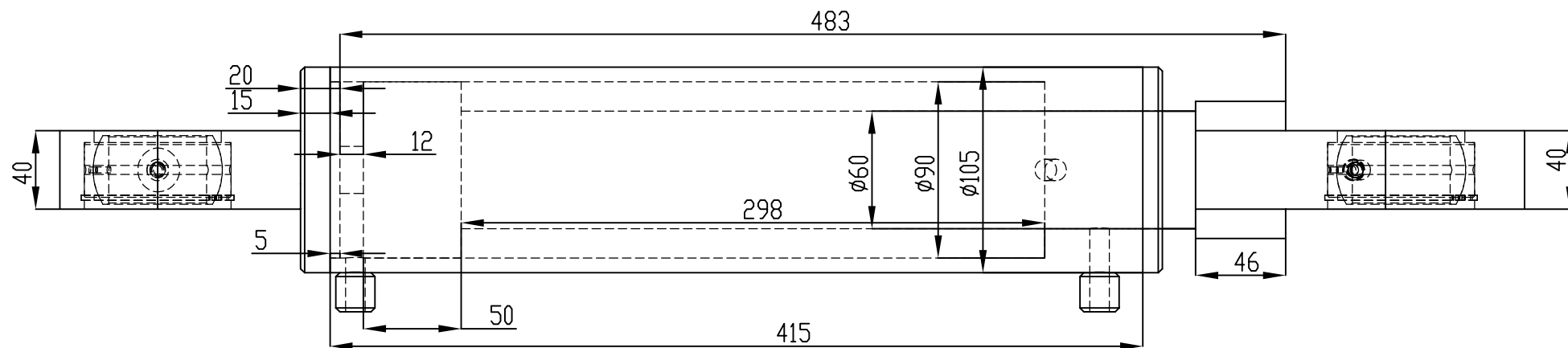
| ÖĞE NO. | PARÇA NUMARASI | MİKT. |
|---------|--|-------|
| 1 | DG500-KKYB | 2 |
| 2 | DG500-KKP | 1 |
| 3 | DG500-KKD2 | 2 |
| 4 | DG500-KKK1 | 2 |
| 5 | DG500-KKYD | 2 |
| 6 | DG500-KKGS | 1 |
| 7 | DG500-KKMIL | 1 |
| 8 | DG500-KKT | 2 |
| 9 | DG500-KKB1 | 2 |
| 10 | DG500-KKB2 | 4 |
| 11 | DG500-KK001 | 2 |
| 12 | DG500-KKAB | 1 |
| 13 | B18.3.1M - 20 x 2.5 x 80 Hex SHCS -- 52NHX | 4 |
| 14 | B18.2.4.6M - Heavy hex nut, M20 x 2.5 -- W-N | 4 |



| ÖĞE NO. | PARÇA NUMARASI | MİKT. |
|---------|----------------|-------|
| 1 | DG500-OBP1 | 1 |
| 2 | DG500-OBD | 4 |
| 3 | DG500-OBP2 | 1 |
| 4 | DG500-OBK | 4 |
| 5 | DG500-OBF | 1 |
| 6 | DG500-OBIT | 2 |
| 7 | DG500-OB001 | 2 |
| 8 | DG500-OBB1 | 8 |
| 9 | DG500-OBAT | 4 |
| 10 | DG500-OBB2 | 4 |



DG500 H.Piston



Silindir Kapalı=635 mm
 Silindir Açık =936 mm
 Strok = 298 mm

Screw Piston Seal Kit
 Compact Set : 90x076x22.4x5.2
 O-RING : 50x4

Cast Cap Seal Kit
 Dust Seal: 60x70x5/7
 Nutring : 60x70x10
 O-RING : 84x4